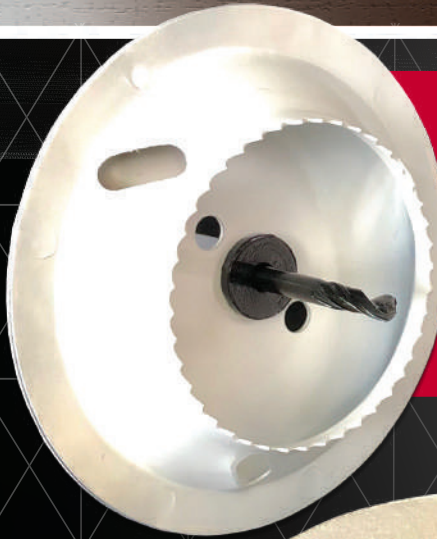


A GAME CHANGER IN DRYWALL REPAIR

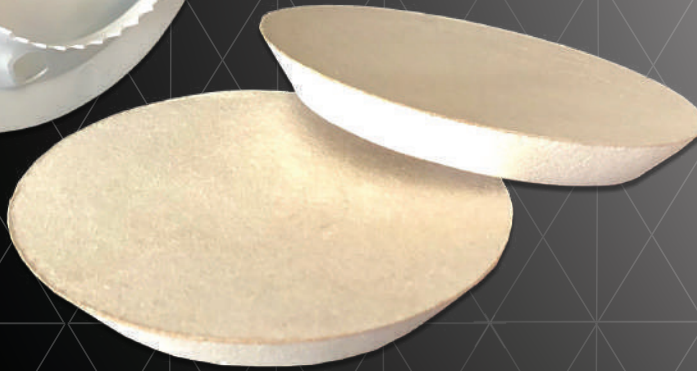


The WALL-EZ® System

Easiest way to have a completely flat surface after repair

Restore structural integrity with drywall plug
Ideal for drill-and-fill insulation projects

Pilot drill
& Tapered hole saw
(Included in WEK2)



For up to 3" damaged areas

Available in four different SKU's:

Counter Display (WED20)

- 7 Kits
- 13 Repair Plugs



Drywall Repair Kit (WEK2)

- Pilot drill
- Tapered hole saw
- 2 Wall plugs



Drywall Plug 2-Pack (WEP2)

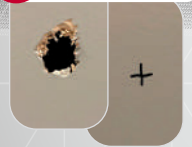
- 2 Wall plugs

Contractor's Pack (WEP30)

- 30 Wall plugs



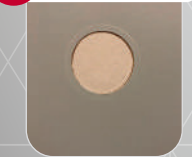
1 Locate damage or access point



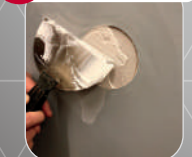
2 Drill hole with pilot drill and tapered hole saw



3 Install tapered plug



4 Apply compound



SCAN FOR TUTORIAL

Since 1935, ALLWAY® is the undisputed leader in technological innovation, high quality and value-added products in the home improvement industry. While specializing in paint sundries, ALLWAY® has expanded to include tools for drywall, wallcovering, ceramic tile, masonry, flooring, cutting and cleaning.

Please contact your ALLWAY® sales representative or send your inquiries to sales@allwaytools.com

Copyright © 2022 Allway Tools, Inc. All Rights Reserved



Scan to see the latest offerings



ALLWAYTOOLS.COM